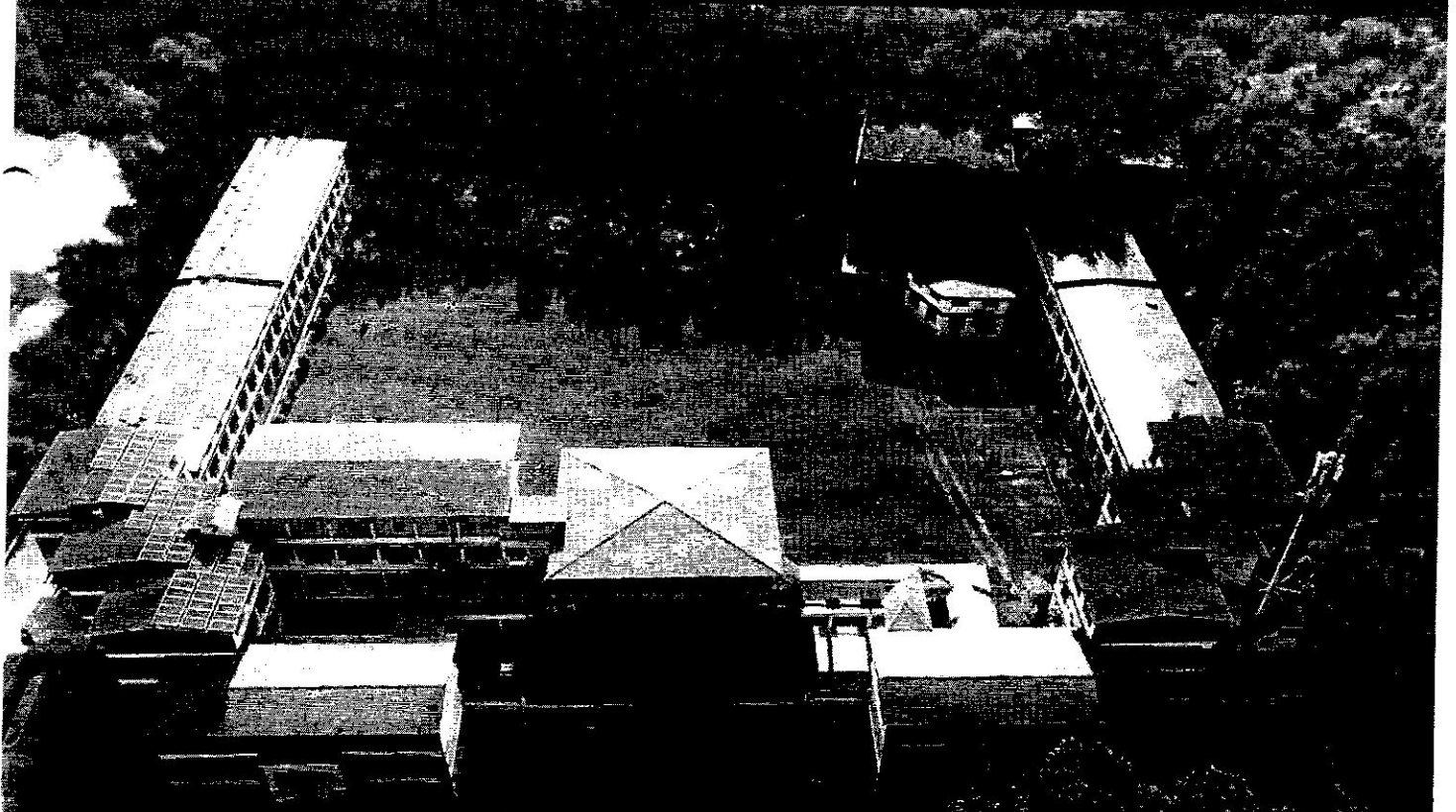




Dolphin (P.G.) Institute
Of Biomedical & Natural Sciences



Waste Management



Waste Management

Policy Purpose:

Environment management is essential for sustainable development of all living organisms including mankind. The Institute understands that environmental conservation is a societal responsibility of the students who will eventually lead the way in society. Rainwater harvesting, garbage management, plastic-free campus efforts, and awareness policies are just a few of the environmental protection measures taken to sensitize the students. Dolphin (PG) Institute is dedicated to handling all wastes, including solid, liquid, and e-waste, in light of this. Wastes produced on the Dolphin (PG) Institute campus are covered by this policy.

Statement:

The Institute is committed to zero waste through the **5R's-Refuse, Reduce, Reuse, Repurpose** and **Recycle** and managing all types of waste generated from its routine operations. The environmental friendly procedures in line with applicable waste management rules are followed.

Objectives:

The following are the objectives of the Waste Management Policy of the Institute:

Ensures minimal waste is generated in the campus.

Solid waste is segregated as bio degradable and non-biodegradable on daily basis and handed over to concerned agency.

Segregation of waste into dry and wet category dustbins is done in strategic locations, thus maintaining the Campus clean.

To increase the rate of recycling of all appropriate materials based on life-cycle principles.

To implement sustainable resource management practices, based on reduce, reuse and recycle principles.

Creating plastic free campus: The College is plastic free campus. The college canteen has strictly been instructed to use only bio-degradable cups and plates and to use separate bins with a view to dump bio-degradable and non-biodegradable wastes separately. The members of the Green Committee and Eco-club volunteers regularly sensitize the staffs, students and other stakeholders of the college not to use of plastic. At various points in the campus there are display board citing "It is Plastic Free Campus".

Waste Management Methodology:

S. No.	Types of Waste	The methodology adopted for its disposal
1.	Construction and Demolition waste & Sweeping	Accumulated in the nominated dustbin and reused.
2.	Sanitary waste i.e., waste comprising of used diapers, sanitary towels or napkins, tampons, incontinence sheets and other similar waste	Accumulated at the covered basket and collected by our collection partners.
3.	E-waste	Accumulated at the E-waste store room and disposed of through an approved recycler.
4.	Plastic waste of Meager weight (Polythene and cups, empty Bottles, Packaging etc.)	Accumulated in the plastic waste bin cover basket and disposed through approved collectors.
5.	Plastic waste of considerable weight (Buckets, Containers etc)	Accumulated at the plastic waste yard open space and disposed through approved collectors.
6.	Paper waste	Accumulated at the paper waste yard (in room) and disposed through approved collectors.
7.	Solid waste (Machines, tools, Iron waste, waste wood, Glass, etc.)	Accumulated at solid waste bin in open place and disposed through approved collectors.
8.	Any other waste, such as packaging material made of thermocol/Styrofoam, packaging, cotton waste etc.	Accumulated at paper waste bin in a room and disposed through approved collectors.
9.	Hazardous liquid waste management	Negligible quantity is generated.
10.	Biomedical Waste	Accumulated at the proper bags and disposed through approved collectors.


Principal
Dolphin PG Institute